

RAJ HOUSING & ESTATES Pvt.Ltd
Your best livinghood

RAAJ REAL ESTATES
Villas & Layout Developers



Ready to occupy
Villas ,Flats and Plots

SRI BALAJI NAGAR

SENEERKUPPAM, SPRAWLING @ 10 ACRES
POONAMALLEE, CHENNAI-56



Detailed Elevation

DUPLEX VILLA

TYPE- 2



GROUND FLOOR PLAN

TYPE-2 VILLA



TYPE-1

Plot Area: 2324 Sq.ft.

Built up Area:

3BHK -2000 Sq.ft.

5BHK -3486 Sq.ft.

TYPE-2

Plot Area: 1163 Sq.ft.

Built up Area:

2BHK -1306 Sq.ft.

3BHK -1745 Sq.ft.

TYPE-3

Plot Area: 775 Sq.ft.

Built up Area:

2BHK -964 Sq.ft.

3BHK -1163 Sq.ft.

FIRST FLOOR PLAN

TYPE-2 VILLA



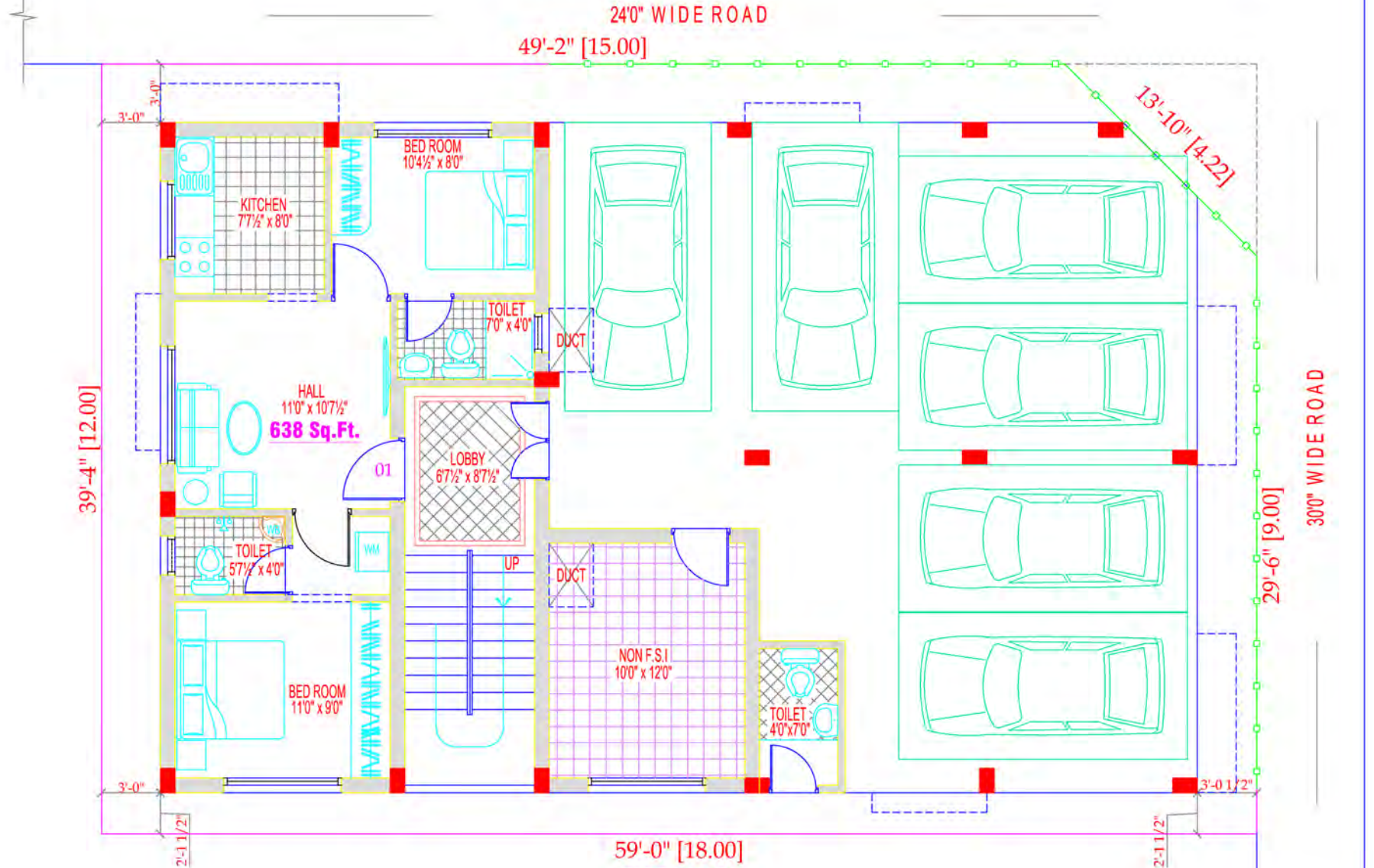
Ready to occupy

For Better Living

APARTMENT

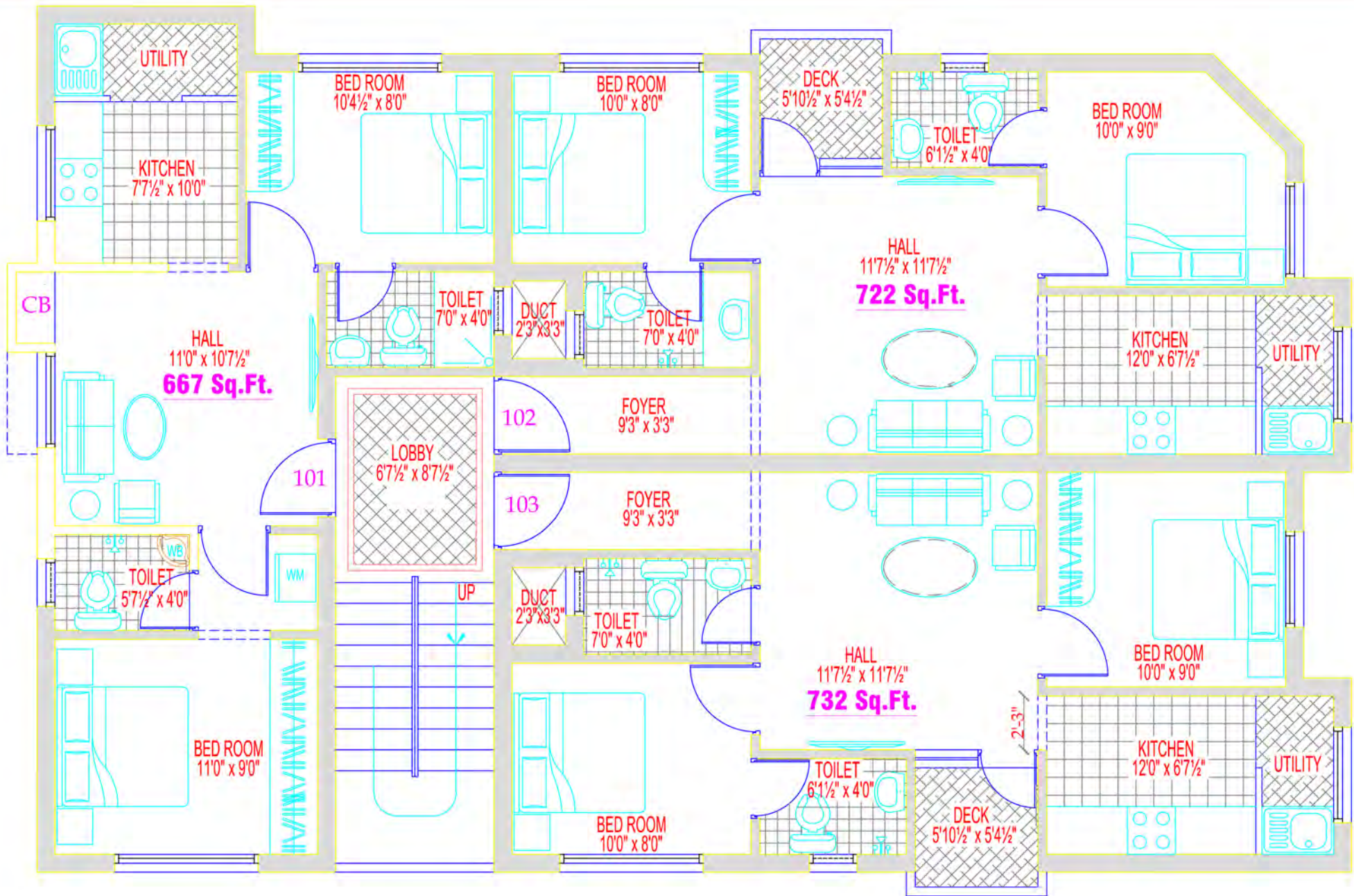
**SRI BALAJI NAGAR – SENEERKUPPAM,
POONAMALLEE, CHENNAI- 56**





SITE CUM GROUND FLOOR PLAN
FLAT AREA

01- 638 Sq.ft.



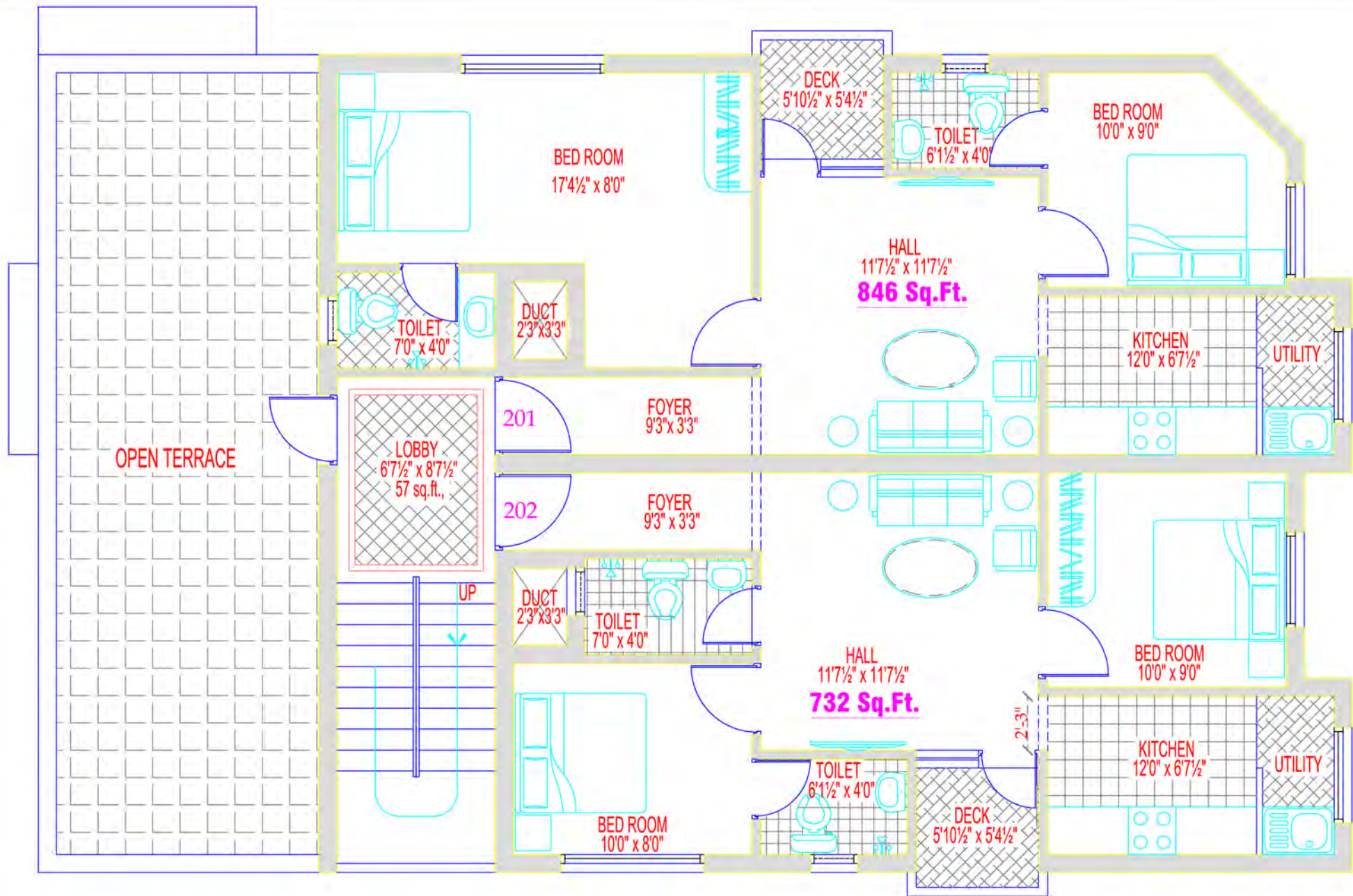
FIRST FLOOR PLAN

FLAT AREA

101 - 667 Sq.ft.

102 - 722 Sq.ft.

103 - 732 Sq.ft.




SECOND FLOOR PLAN

FLAT AREA

201 - 846 Sq.ft.

202 - 732 Sq.ft.

SPECIFICATION

- **RCC Framed Structure**
 - **3'0" height from the existing Road level**
 - **Brick work with 9" all outer walls and 4.5" inner walls.**
 - **Vitrified Tiles in floor area**
 - **Main Door with Teak Wood**
 - **Polished Brown Granite Platform with 2 Ft of Ceramic Tile Dado.**
 - **And Single Stainless Steel Sink**
 - **Stainless Steel Handrails in Staircase**
 - **Concealed Three Phase Copper Wiring with PVC Conduits**
 - **One rain water harvest and Soakpit for sullage.**
 - **Drinking Water Pipe Line for each Independent Houses.**
 - **Seperate septic tank, underground water sump and overhead tank with two compartment for individual villa.**
 - **Septic Tank, underground water sump and overhead tank are common for apartment.**
 - **Safety grill for service varandha, main door and open terrace door.**
- 

VILLA PLOTS

Sri Balaji Nagar

Sennerkuppam @ 10 Acres
Poonamallee, Chennai-56

CMDA
Approved

Available Plots area
775 Sq.ft. - 2400 Sq.ft.



PROJECT HIGHLIGHTS

EASY ACCESSIBILITIES

2 Kms to Poonamallee Bus Stand
5 Kms to Avadi Railway Station
4 kms to 200' Inner Ring Road
7 kms to Porur Junction
8 kms to Koyambedu (CMBT) Bus Stand
12 Kms to Guindy

HOSPITALS

1.0 Km to Panimalar Hospital
1.0 Km to Mangalam Maternity Hospital
1.5 Kms to ACS Medical Hospital
1.5 Kms to Savitha Dental Hospital
1.5 Kms to Aravind Eye Hospital
2 Kms Metha Hospital
2 Kms to Be Well Hospital
5 Kms to Savitha Medical Hospital
5 Kms Apollo Speciality Hospital
5 Kms to Sri Ramachandra Hospital
10 Kms to Miot Hospital

DESCRIPTION

10 Acres Project
1 Acres Park
3 Mins From Poonamallee
10 Mins from Avadi
15 Mins From Porur

SCHOOLS

1 Kms to S.A School
1 Kms to Aadithya Vidhyasaram School
1 Kms to Vellammal Vidyalaya CBSE School
1.5 Kms to Jai Jai Sankara International School
1.5 Kms to Narayana e-Techno School
1.5 RMKV Schools
1.5 Savitha Pupil School
2 Kms to Spartan International School
2 Kms to Sri Kirsh International School
2.5 Kms to Crescent School

ENTERTAINMENT HUBS

3 Kms Sri Bhagavathy Theatre
3 Kms Gokulam Cinemas
4 Kms to EVP Carnival Cinemas
8 Kms Queensland Amusement Park

AMENITIES

24 Hrs Security Services
Children's Play Area
1 Acre Park
Avenue Tree
Street Lighting
Project fully Concrete Road
Potable Drinking Water
Pleasant surroundings

COLLEGES

1 Kms to S.A Engineering College
1.5 Kms to Panimalar Eng and Medical College
1.5 Kms to Savitha Dental College
5 Kms to Sri Ramachandra Medical College
5 Kms to Muthukumaran Engineering College
5 Kms to Alpha Engineering College
5 Kms Rajalakshmi Institute of Technology



VILLA PLOTS

Raj Temple City

Thirumazhisai @ 5 Acres
Chennai-600124

CMDA
Approved

Available Plots area
800 Sq.ft. - 2400 Sq.ft.



LOW BUDGET PLOTS

Sri Balaji Nagar Phase II

Meppur @ 12 Acres
Poonamallee, Chennai-56

**CMDA
Approved**

Available Plots area
450 Sq.ft. - 2000 Sq.ft.






ABOUT US

RAJ HOUSING & ESTATES PVT LTD was established in 2011 by R. Sivaprakasam (Managing Director) and V. Akila (Director), It is having association with Raaj Real Estates in Sales & Marketing.

RAAJ REAL ESTATES is a leading developer in developing Villas and layouts in and around Chennai, It was established in 2000. We as an organization, believe that the quality of our construction and must enrich the quality of the customers life. Hence our emphasis has always been of effective space utilization, superior craftsmanship, personal supervision, continues R&D and exemplary finishes. We strive to achieve Excellence.



RAJHOUSING & ESTATES Pvt.Ltd
YOUR BEST LIVING HOOD

RAAJ REAL ESTATES
Villas & Layout Developers

ADDRESS :

NO#70/7,P.H.Road,sennerkuppam,
poonamallee,chennai-600 056.
(Opposite Aravind Eye Hospital)

For sales and marketing:

Mail ID- salesrajhousing@gmail.com

Facebook ID-<https://www.facebook.com/raajrealestates/>

Twitter ID- <https://www.twitter.com/salesrajhousing>

Website ID- www.rajhousing.co.in

Mob - 9551699499, 9551599499, 9551799499

For Admin:

Mail ID-raajreal@gmail.com

Contact:044-26791111,9551299499.

Pre Approved :



भारतीय जीवन बीमा निगम
LIFE INSURANCE CORPORATION OF INDIA



State Bank of India





...Thanks & Good luck...

